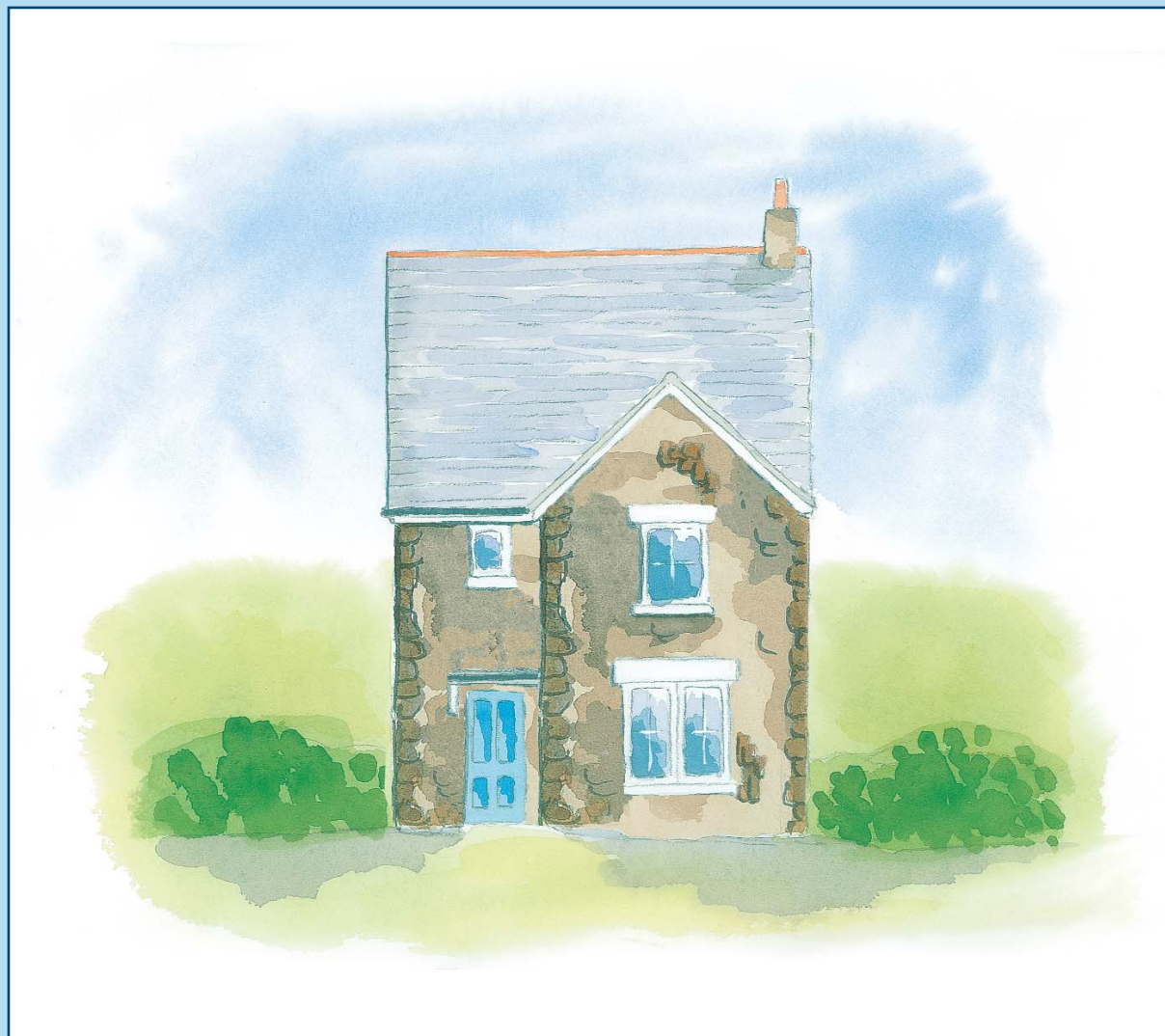
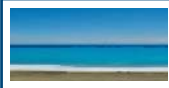


WIDGEON



A traditionally designed character three bedroom house, the Widgeon makes ideal use of space to provide generous accommodation throughout.

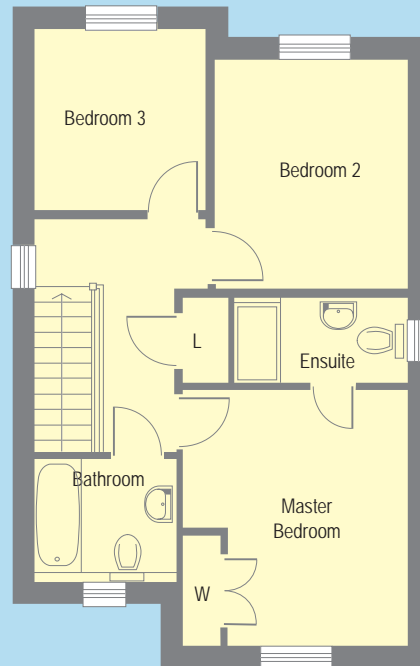
Light and airy sitting and dining rooms can be found on the ground floor, while the large master bedroom with en suite bathroom on the first floor is complemented by two further good-sized bedrooms and a family bathroom.



WIDGEON

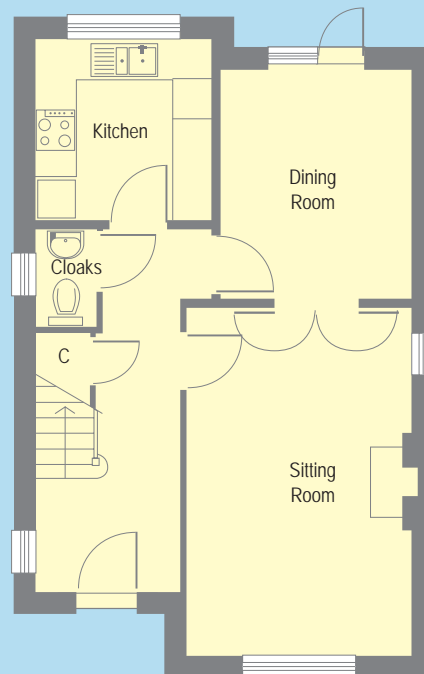
FIRST FLOOR

	Metric (mm)	Imperial
Master Bedroom	3895 x 3485	12'9" x 11'5"
Bedroom 2	3470 x 2938	11'5" x 9'8"
Bedroom 3	2750 x 2652	9' x 8'8"



GROUND FLOOR

	Metric (mm)	Imperial
Sitting room	5270 x 3440	17'3" x 11'3"
Dining room	3470 x 2938	11'5" x 9'8"
Kitchen	2750 x 2652	9' x 8'8"



KEY

- C = CUPBOARD
- W = WARDROBE
- L = LINEN

Please note. The positions of windows may vary according to the position of the house. Room sizes may vary slightly. Please ask a sales representative to check dimensions as built on site. Artist's illustration is indicative only.