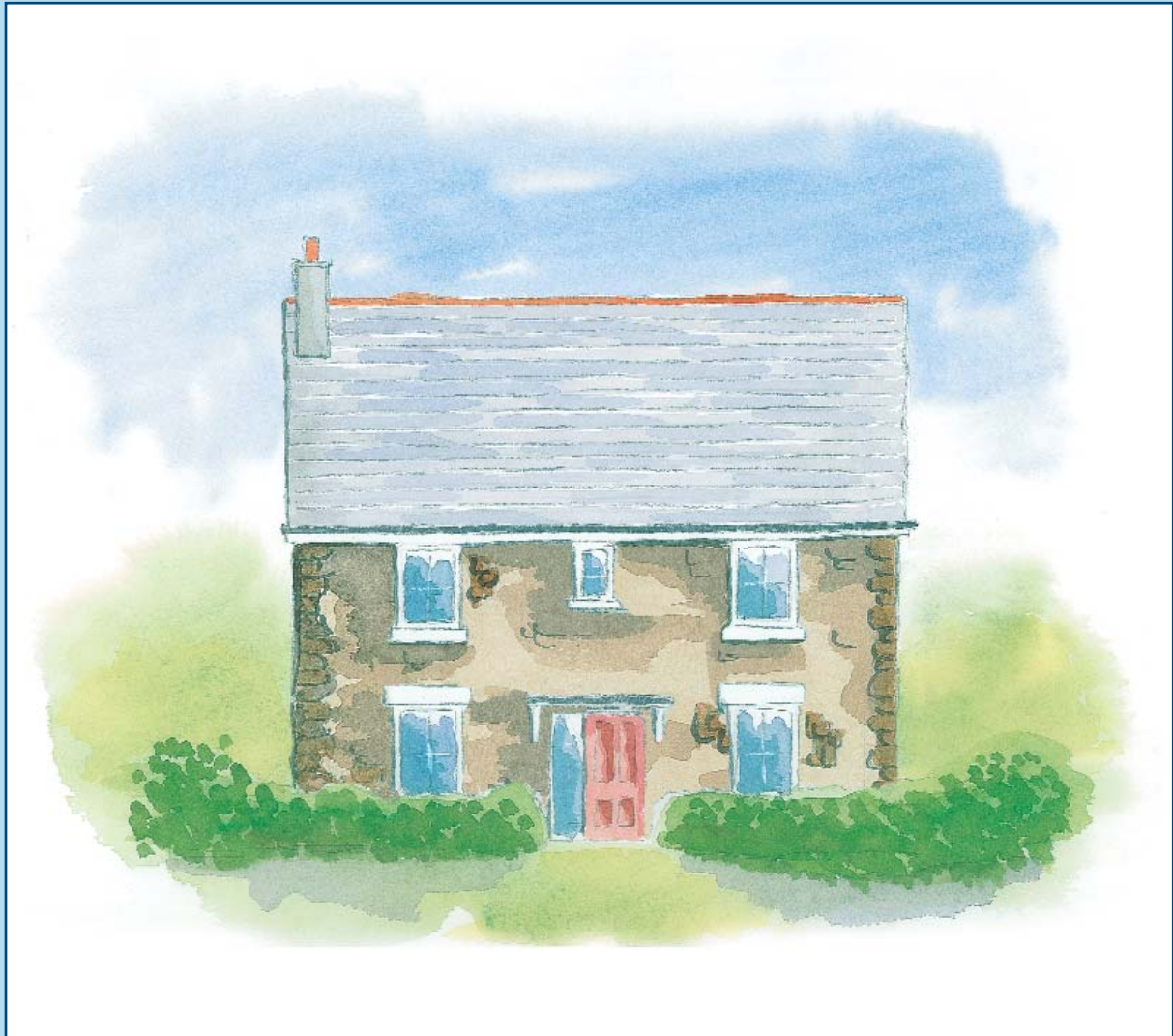




saltings reach

LELANT, ST IVES

# SHELLDUCK



Arranged over two floors, this four bedroom house is impressively spacious, both in terms of living accommodation and storage. The ground floor features a large sitting room and breakfasting kitchen, while the light airy dining room opens onto the garden to provide a charming space for entertaining guests, whatever the season.

On the first floor, the large master bedroom boasts an en suite bathroom and is complemented by three further good-sized bedrooms and a family bathroom.

  
Southern Heritage

0800 298 4112

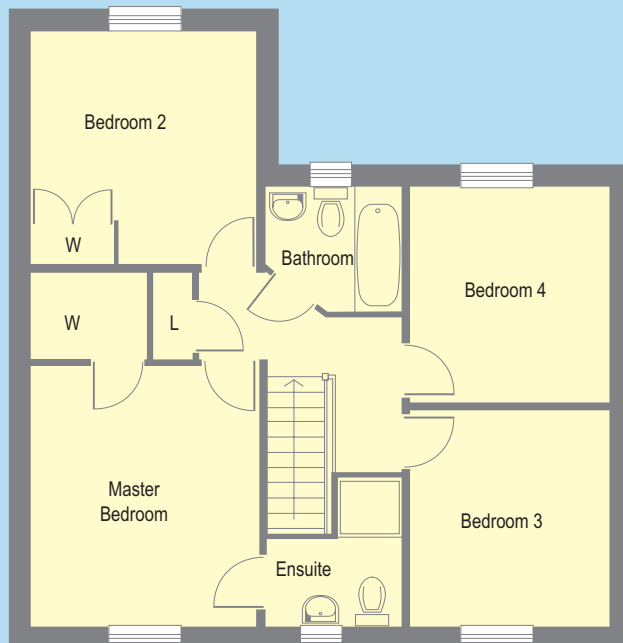
[www.saltingsreach.co.uk](http://www.saltingsreach.co.uk)



## SHELLDUCK

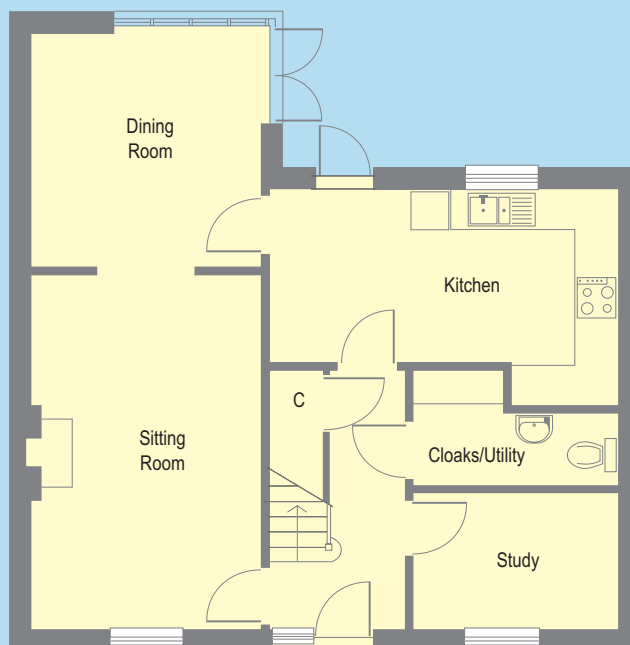
### FIRST FLOOR

	Metric (mm)	Imperial
Master Bedroom	3977 x 3500	13'1" x 11'6"
Bedroom 2	3563 x 3500	11'8" x 11'6"
Bedroom 3	3300 x 3065	10'10" x 10'1"
Bedroom 4	3250 x 3065	10'8" x 10'1"



### GROUND FLOOR

	Metric (mm)	Imperial
Sitting room	5400 x 3500	17'9" x 11'6"
Dining room	3563 x 3500	11'8" x 11'6"
Kitchen	5240 x 2600	17'2" x 8'6"
Study	3065 x 2100	10'1" x 6'11"



- C = CUPBOARD
- W = WARDROBE
- L = LINEN CUPBOARD

Please note. The positions of windows may vary according to the position of the house. Room sizes may vary slightly. Please ask a sales representative to check dimensions as built on site. Artist's illustration is indicative only.