



saltings reach

LELANT, ST IVES

PIPIT



A three bedroom home of imaginative design, the Pipit blends quirky style with total practicality. The ground floor features a good-sized integral garage, and an additional room opening onto the garden, which can be used either as a garden room, or a third bedroom.

The main living accommodation can be found above, comprising; a large open plan sitting, dining and kitchen area to the first floor with an en suite master bedroom, second bedroom and further bathroom to the second floor.


Southern Heritage

0800 298 4112

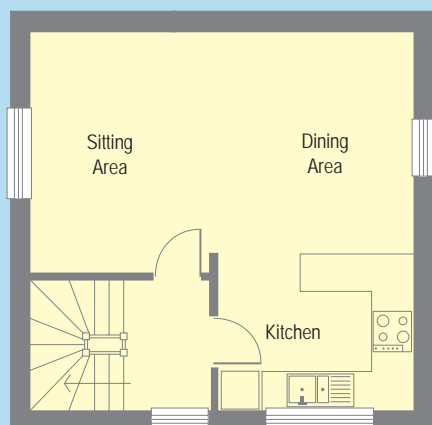
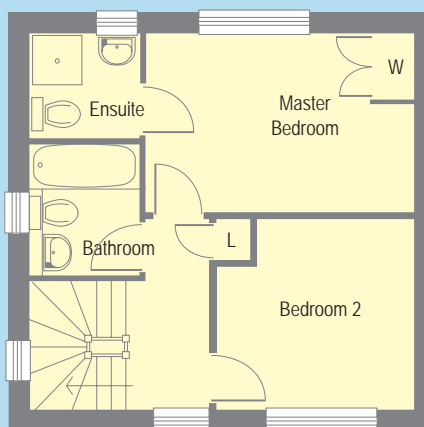
www.saltingsreach.co.uk



PIPIT

SECOND FLOOR

	Metric (mm)	Imperial
Master Bedroom	4222 x 2877	13'10" x 9'5"
Bedroom 2	3115 x 3075	10'3" x 10'1"



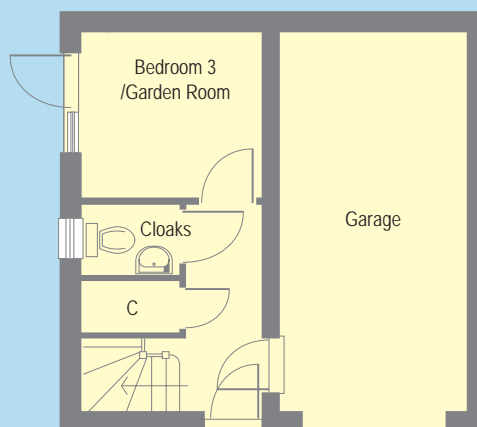
FIRST FLOOR

	Metric (mm)	Imperial
Sitting/ Dining Area	6027 x 3857	19'9" x 12'8"
Kitchen	3090 x 2495	10'2" x 8'2"

GROUND FLOOR

	Metric (mm)	Imperial
Bedroom 3/ Garden Room	2837 x 2657	9'4" x 8'9"

- W = WARDROBE
- C = CUPBOARD
- L = LINEN CUPBOARD



Please note. The positions of windows may vary according to the position of the house. Room sizes may vary slightly. Please ask a sales representative to check dimensions as built on site. Artist's illustration is indicative only.