

KITTIWAKE



Arranged over three floors, this extremely characterful home combines five generous bedrooms, with appropriately proportioned living spaces to match, including; a sitting room, study and breakfasting kitchen. In addition, the dining room enjoys impressive natural light through large glazed areas, and opens onto the garden. Perfect for all year round entertaining.

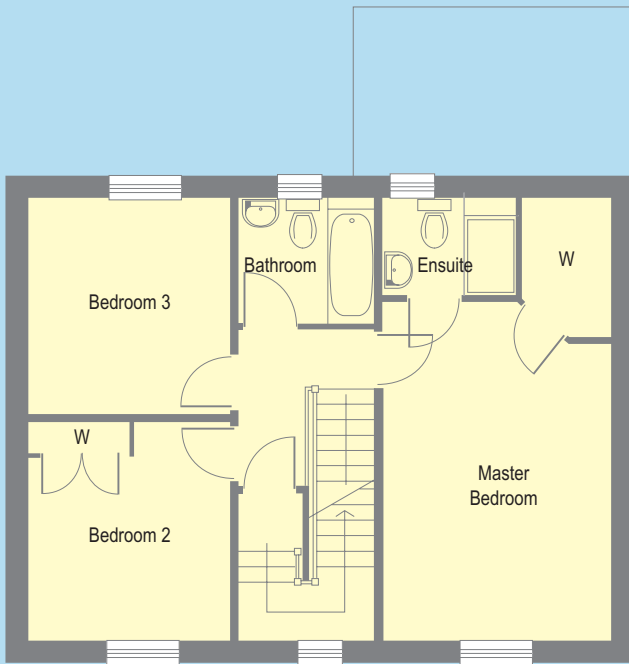
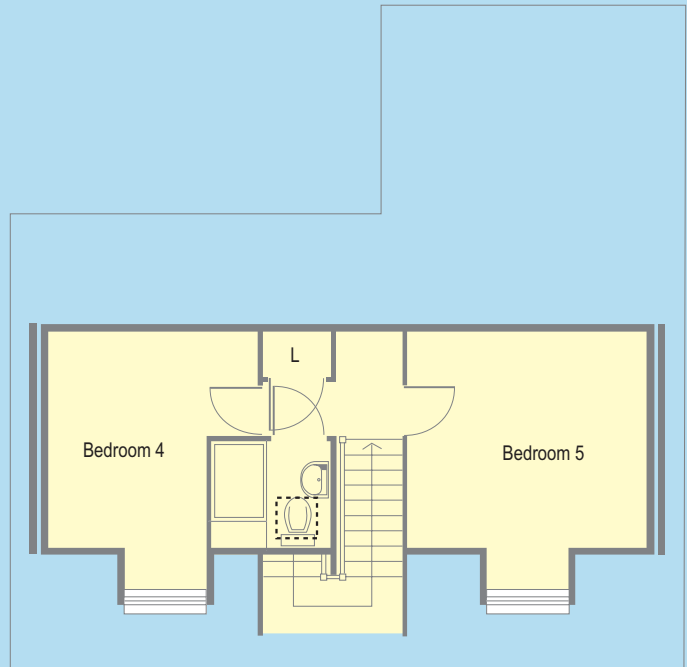
The first floor features the large master bedroom with en suite bathroom and spacious fitted wardrobe, complemented by two good-sized bedrooms, and a family bathroom. Two further bedrooms and a shower room can be found on the second floor.



KITTIWAKE

SECOND FLOOR

	Metric (mm)	Imperial
Bedroom 4	4022 x 3065	13'2" x 11'6"
Bedroom 5	4022 x 3500	13'2" x 10'1"



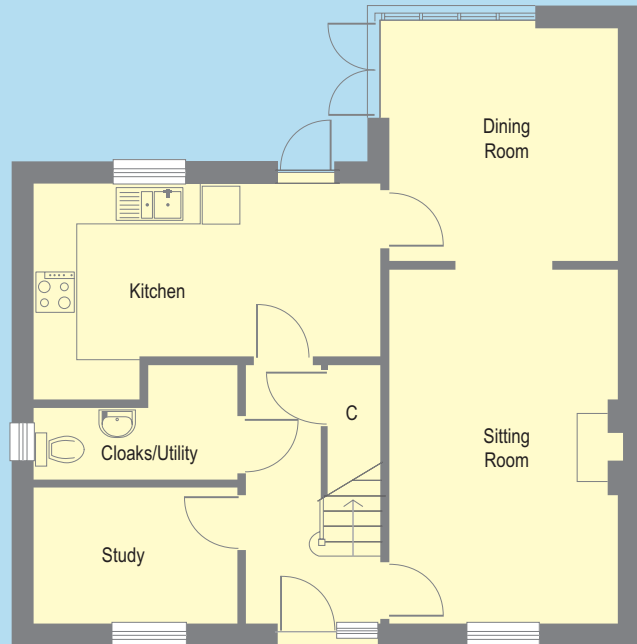
FIRST FLOOR

	Metric (mm)	Imperial
Master Bedroom	4995 x 3500	16'5" x 11'6"
Bedroom 2	3467 x 3065	11'4" x 10'1"
Bedroom 3	3160 x 3065	10'4" x 10'1"

GROUND FLOOR

	Metric (mm)	Imperial
Sitting room	5400 x 3500	17'9" x 11'6"
Dining room	3563 x 3500	11'8" x 11'6"
Kitchen	5240 x 2600	17'2" x 8'6"
Study	3065 x 2100	10'1" x 6'11"

- W = WARDROBE
- C = CUPBOARD
- L = LINEN
- = VELUX ROOF LIGHT



Please note. The positions of windows may vary according to the position of the house. Room sizes may vary slightly. Please ask a sales representative to check dimensions as built on site. Artist's illustration is indicative only.