

GADWALL



With its feature porch and handsome façade, the Gadwall combines space and period style charm to provide a four bedroom house of exceptional character. The ground floor features an impressive dining hall and breakfasting kitchen, while the large sitting room opens out onto the garden making an attractive entertaining space.

The first floor features the large master bedroom with en suite bathroom and generous fitted wardrobes, complemented by three further good-sized bedrooms and a family bathroom.



GADWALL

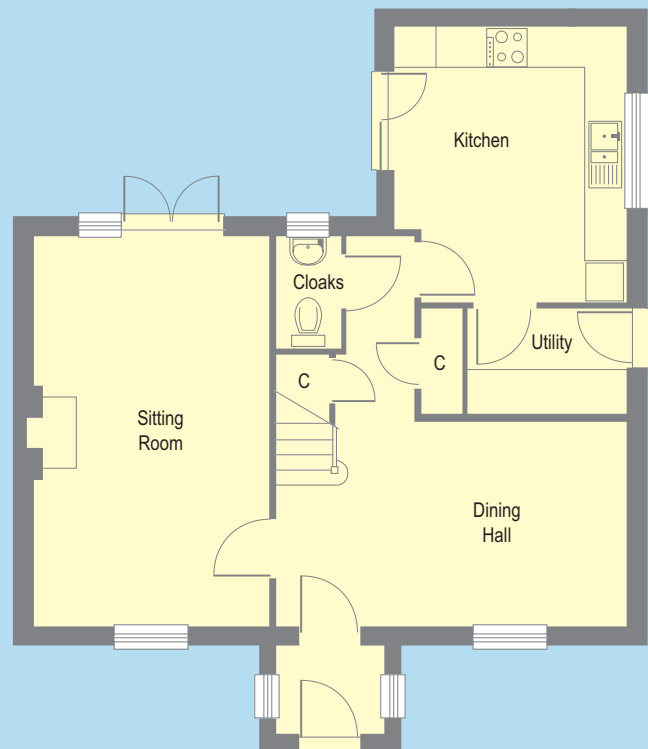
FIRST FLOOR

	Metric (mm)	Imperial
Master Bedroom	4340 x 3500	14'3" x 11'6"
Bedroom 2	3715 x 3090	12'2" x 10'2"
Bedroom 3	3440 x 3050	11'3" x 10'
Bedroom 4	2250 x 2075	7'5" x 6'10"



GROUND FLOOR

	Metric (mm)	Imperial
Sitting room	5915 x 3500	19'5" x 11'6"
Dining Hall	5584 x 3115	18'4" x 10'3"
Kitchen	4185 x 3440	13'9" x 11'3"



- C = CUPBOARD
- L = LINEN CUPBOARD
- W = WARDROBE

Please note. The positions of windows may vary according to the position of the house. Room sizes may vary slightly. Please ask a sales representative to check dimensions as built on site. Artist's illustration is indicative only .