

# FULMAR



Arranged over three floors, this five bedroom house defines the perfect blend of characterful period-style architecture, generous family living spaces and attractive entertaining areas.

The ground floor features a large family breakfasting kitchen, while the sitting room opens onto a tranquil garden room bathed in natural light.

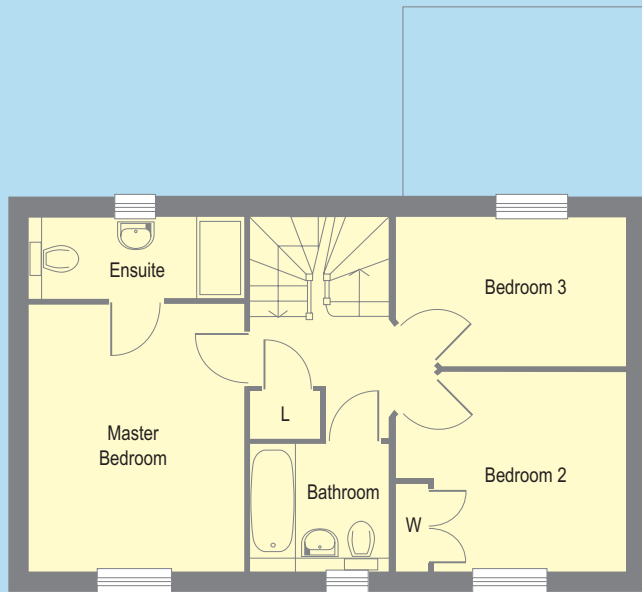
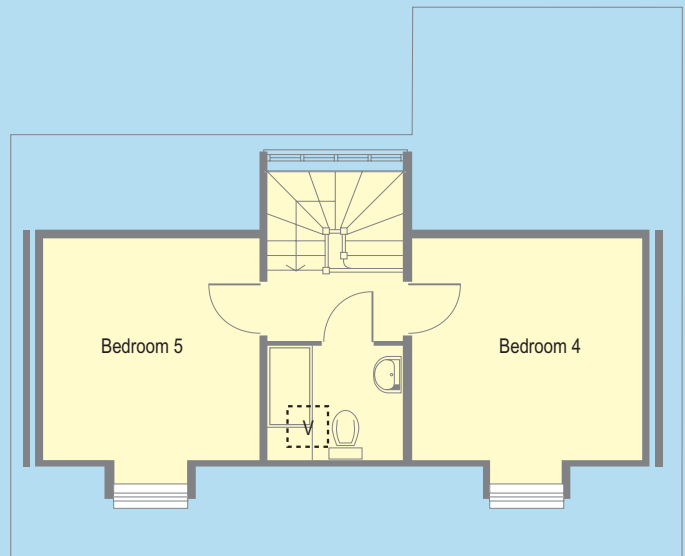
On the first floor, the substantial master bedroom and large en suite bathroom are complemented by two good-sized bedrooms and a family bathroom, while two further bedrooms and a shower room can be found on the second floor.



## FULMAR

### SECOND FLOOR

	Metric (mm)	Imperial
Bedroom 4	3525 x 3372	11'7" x 11'1"
Bedroom 5	3372 x 3207	11'1" x 10'6"




### FIRST FLOOR

	Metric (mm)	Imperial
Master Bedroom	4047 x 3207	13'3" x 10'6"
Bedroom 2	3500 x 3032	11'6" x 9'11"
Bedroom 3	3500 x 2245	11'6" x 7'4"

### GROUND FLOOR

	Metric (mm)	Imperial
Sitting room	5325 x 3500	17'6" x 11'6"
Kitchen/		
Dining room	5325 x 3200	17'6" x 10'6"
Garden Room	3000 x 2400	9'10" x 7'10"

- C = CUPBOARD
- L = LINEN CUPBOARD
-  = VELUX ROOF LIGHT
- W = WARDROBE



Please note. The positions of windows may vary according to the position of the house. Room sizes may vary slightly. Please ask a sales representative to check dimensions as built on site. Artist's illustration is indicative only.